

Our school uniform promotes a real sense of school identity, shared values, self-confidence and a shared sense of community. The uniform is actively supported by our pupils, parents, school Governors and is of great benefit to our young people.

#### **The standard school uniform:**

- White polo shirt, school shirt or blouse (does not have to be badged)
- Bushfield blue (Y3,Y4,Y5) / black (Y6) sweatshirt or cardigan with school logo
- Black, navy or grey trousers / skirt (not jeans)
- Black, dark brown or navy shoes (no trainers or boots)
- Black, navy, white or grey socks or tights (no patterned or multi-coloured socks)

#### **Summer months:**

During the summer months it is important to keep the standard of uniform high, please help us with this by ensuring that your child is appropriately dressed. This particularly applies to footwear and in the interest of safety, children are **not** permitted to wear open-toed sandals.

The main uniform standard still applies, however you can adapt the uniform due to the season as follows:

- Blue and white checked dress
- Black, navy or grey skirt
- Black, navy or grey smart school shorts
- School shoes must still be worn, trainers, sandals flip-flops are not acceptable in any season
- Hat

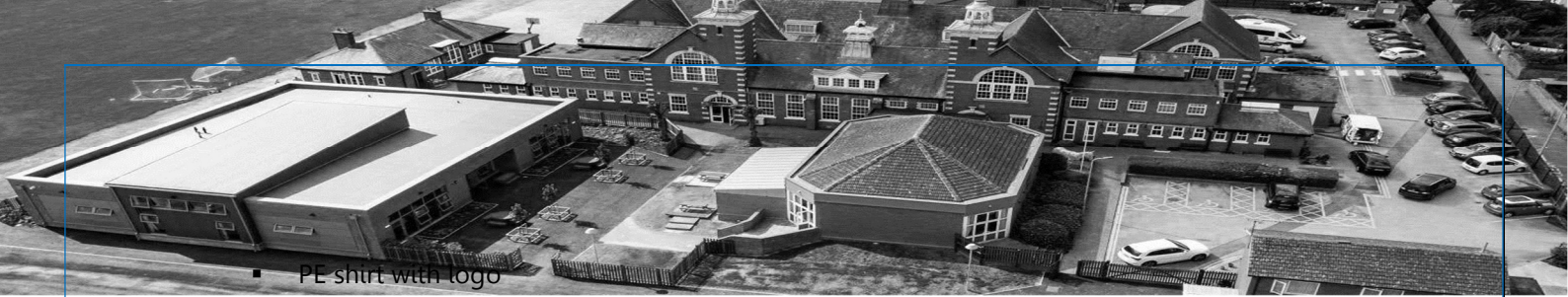
#### **Winter months:**

During the winter months it is just as important to keep the standard of uniform high and to ensure that your child will be kept as warm and as comfortable as possible. They will continue to enjoy outdoor play time (unless wet-play is called) therefore having adequate protection to the elements is important. We suggest providing additional labelled items such as:

- Gloves
- Scarf
- Hat
- Winter coat

#### **PE:**

Please wear the following kit on PE days:



- PE shirt with logo
- Black shorts
- Warm tracksuit for outdoor games during the colder months – plain and muted colours
- Trainers or plimsolls and change of socks - (really important as we have games sessions in all weathers and do not want your child to have wet feet!). Please do not wear trainer socks.

Our PE team will advise you in good time if any alternative kit is needed.

### **Jewellery:**

For health and safety reasons, no jewellery (excluding stud earrings) are to be worn in school with the exception of a wrist watch which is permitted. (Please note that Smart Watches (devices with cameras, internet, and recording capability) are treated like mobile phones and the children will be expected to hand them in at the start of the day and collected when they go home).

If you wish your child to wear an item of jewellery for a specific reason please contact the school office in writing at [office@bushfieldschool.org](mailto:office@bushfieldschool.org) for us to discuss with you.

### **Standards:**

The appearance of our children is important for them and for the image we portray to the local community. All children must attend school in the standard uniform, presented in a neat and tidy manner. Clothing should be washed regularly and maintained.

Hair should be of a natural colour, clean, neat and tidy. Hair bands can be used, ideally in school colours.

Nails should be kept neat, clean and free of any kind of varnish, extensions, gel or acrylic matter.

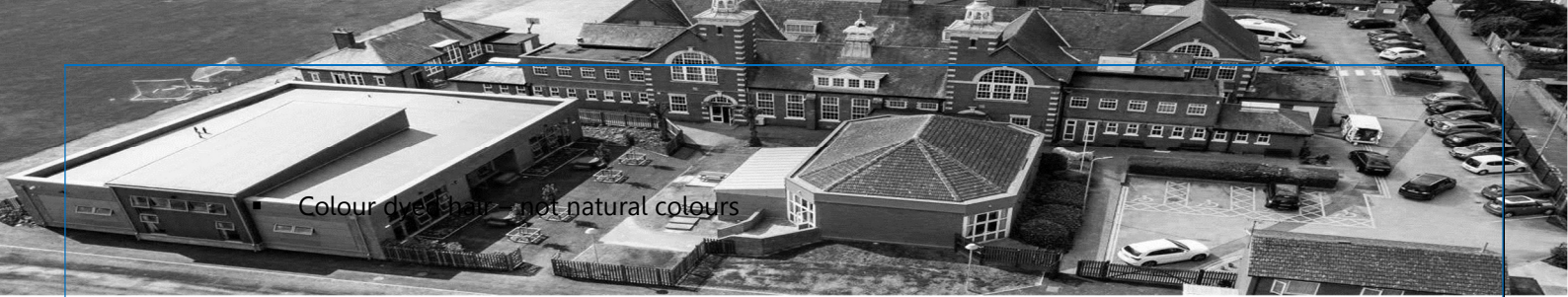
Make-up is not permitted, any child found wearing make-up will be asked to remove it.

If for any reason your child is unable to attend school in the correct uniform, please notify us so that we can make any necessary allowances.

If you are experiencing difficulties trying to acquire the correct uniform, please contact the school office to see if there is any support we can offer [office@bushfieldschool.org](mailto:office@bushfieldschool.org).

### **The main forms of dress that are unacceptable are:**

- Any branded team sports clothing such as football tops/scarves
- Clothing likely to cause offence (political slogans, offensive language or anti-religious symbols)
- Clothing or jewellery likely to cause Health & Safety difficulties (E.g. dangling earrings, flammable material)
- Footwear likely to damage flooring or unsuitable for school such as open-toe shoes or heels
- Baseball caps – with the exception of the summer months when they can be worn walking to and from school and at break times but not to be worn indoors
- Shorts (unless tailored school shorts in the specified colours)
- Leggings
- Make-up
- Nail varnish
- Acrylic, gel or any other false nails or extensions



**Purchasing uniform:**

We have considered the requirements of our uniform from a cost point of view and it is easy to obtain, at the following outlets:

- Maisies in Wolverton - <https://www.maisies-superstore.co.uk/schoolwear-and-childrens-wear/>
- myclothing.com (formerly Tesco) - <https://myclothing.com/>

As mentioned before, if you are experiencing any difficulties obtaining uniform please speak with the school office.

**Lost property:**

All uniform must be labelled with the child’s name. This will allow us to return any lost item to its owner.

Uniform is often found in and around the school, please contact the school office as soon as you notice your child has lost something this way we can direct them to the lost property store and hopefully reunite them with their item!

Clothing name labels can fade over time through washing and general wear and tear, so please do label clothing regularly and check the ink/stamp/stitching for clarity.

**Used Uniform Shop:**

We currently, towards the end of each term, ask parents to look through lost property and reclaim any lost items. We will continue this as we move forward with items not named or collected moving into our Used Uniform Shop.

We will, therefore, have some limited branded items available for purchase (for a donation to the school) which helps our school to be environmentally conscious and sustainable where items still have wearable life as well as adding an even more affordable option of our uniform. The dates of these sales will be shared with parents directly.

The school office does not hold any items of uniform.

**Message from the team:**

We are always ready to speak to you should you have any queries or concerns. You can call us, email us or pop in - please keep communicating with us!

You can contact any one of us by calling 01908 314876 or via email:

[office@bushfieldschool.org](mailto:office@bushfieldschool.org).



**PLEASE HELP US BY NAMING ALL OF YOUR CHILDS CLOTHING, SHOES, AND SPORTSWEAR**

